

- Die cast aluminium body
- Body color: Red, Yellow
- Glass Cover: Red or White Fresnel glass for 360° visibility

- Anodized aluminium reflector
- UV - stabilized polyester powder coating
- Stainless steel screws, durable silicone rubber gasket

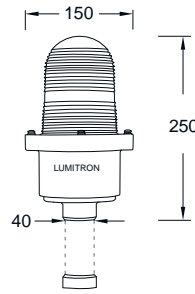
F17 - Single



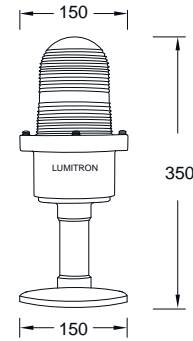
Red Glass



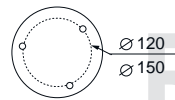
White Glass



Pipe Mount



Base Mount



GLS 100W

LED LED 10W / 220VAC

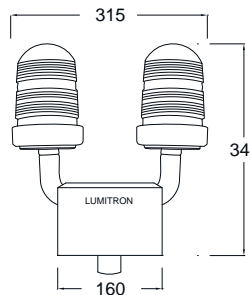
F19 - Twin



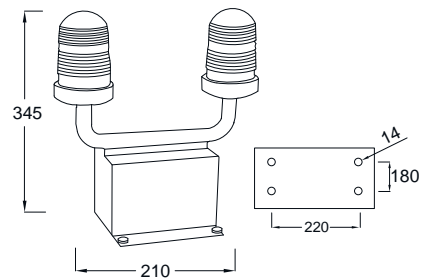
Red Glass



White Glass



Pipe Mount



Base Mount

GLS 2x100W

LED LED 2x10W / 220VAC

Industrial

LUMITRON