

## LMUL-133-SS

### LED Inground Uplight



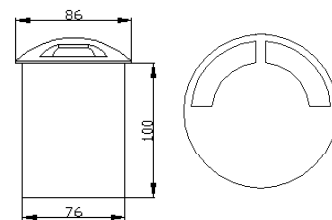
Lumitron's LMUL-133, architectural uplight luminaires designed for decorative amenity applications as decorative upward or wall lightings for hotels, shopping arcades, and gardens. Ideal for terraces, corridors, walkways, columns, walls, perimeters, guide lights, columns, trees, bushes, entrances, and facades.

#### Specifications

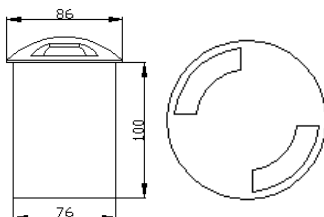
- Housing: stainless steel body and stainless steel cover
- High impact, shock resistant, toughened safety tempered glass.
- Durable silicone rubber gaskets
- Stainless steel screws.
- Vandal- and shock-resistant construction for walk-over and car drive-over 2,000kg at max.
- Protection level IP67 dust tight and immersion proof. DIN, IEC Class I.
- Installation: recessed mounting with polypropylene tube.



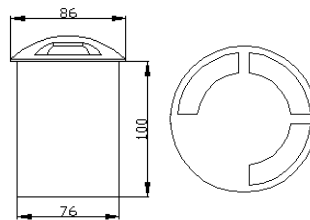
**LMUL-133-A-SS**



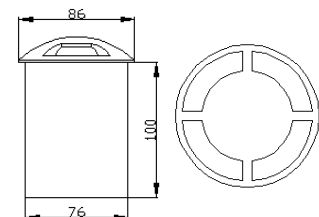
**LMUL-133-B-SS**



**LMUL-133-C-SS**



**LMUL-133-D-SS**



LUMITRON REF.	Lamp Type	Supply Voltage	Color
LMUL-133-A-SS	LED 1W	12VDC	White, Warm White, Red, Green, Blue
	MR16 50W	12VDC	Warm White
LMUL-133-B-SS	LED 1W	12VDC	White, Warm White, Red, Green, Blue
LMUL-133-C-SS	LED 1W	12VDC	White, Warm White, Red, Green, Blue
LMUL-133-D-SS	LED 1W	12VDC	White, Warm White, Red, Green, Blue